



FEATURES:

- Recessed mounted waterproof Downlight
- COB LED chip by CREE

Housing

- Body made of die-cast aluminium with polyester powder coated.
- Trim made of die-cast aluminium in White, Black, Grey and Silver finish

Diffuser

- Tempered glass thermal shock resistant

Reflector

- Anodized aluminium

Others

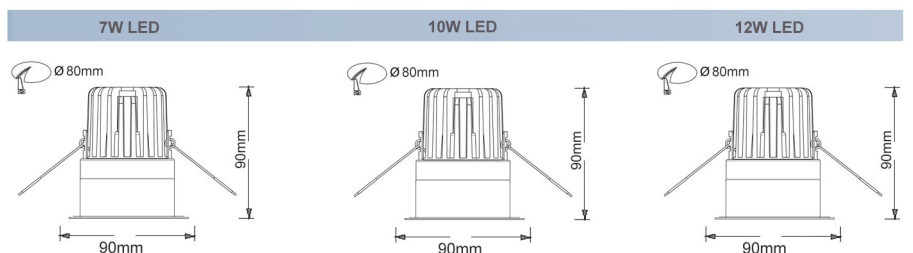
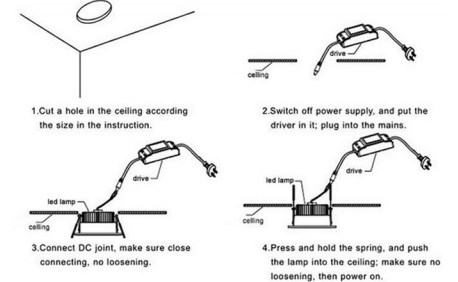
- ◆ Aluminium structured heat sink
- ◆ High efficient COB LED chip
- ◆ Dimmable Dalli / TRIAC 0 - 10V Available on request
- ◆ Heat resistant and solid conduct wiring
- ◆ Ideal for interior lighting
- ◆ European standard of EN 60598



TM-FS910



Installation



Model No.	TM-FS910			
Power	7W LED	10W LED	12W LED	15W LED
LED Type	CREE	CREE	CREE	CREE
Voltage	AC85V-265V	AC85V-265V	AC85V-265V	AC85V-265V
Power Factor	>0.90	>0.90	>0.90	>0.90
Color Temp.	2700K - 6500K	2700K - 6500K	2700K - 6500K	2700K - 6500K
CRI	≥90	≥90	≥90	≥90
Luminous Flux	100LM/W	100LM/W	100LM/W	100LM/W
Beam Angle	15°/ 24°/ 38°	15°/ 24°/ 38°	15°/ 24°/ 38°	15°/ 24°/ 38°
Temp. in Working	-30°C +50°C	-30°C +50°C	-30°C +50°C	-30°C +50°C
Protection	IP65	IP65	IP65	IP65
Dimension	90x90x90mm	90x90x90mm	90x90x90mm	90x90x90mm
Life Span	50000Hrs			