



FEATURES:

- Recessed mounted waterproof LED Downlight
- COB LED chip by CREE / Philips / Bridgelux

Body

- Made of die-cast aluminium with surface powder coated.
- White, Black, Silver, Gold finish

Diffuser

- Tempered clear or frosted glass

Reflector

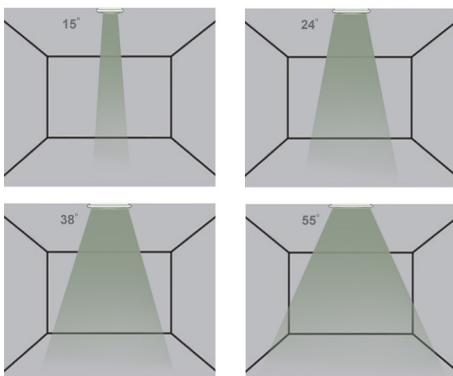
- Anodized aluminium adjustable reflector

Others

- ◆ Aluminium structured heat sink
- ◆ High efficient COB LED chip
- ◆ Dimmable Dali / TRIAC 1 - 10V Available on request
- ◆ Heat resistant and solid conduct wiring
- ◆ Ideal for wet areas
- ◆ European standard of EN 60598



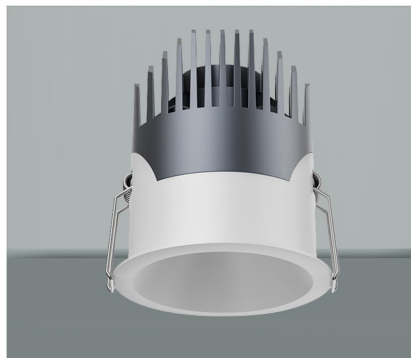
Beam Angle



Available:	3000K	3500K	4000K	4500K	5000 - 5500K	6000 - 6500K
------------	-------	-------	-------	-------	--------------	--------------

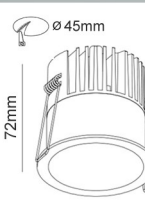
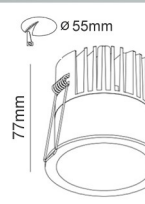
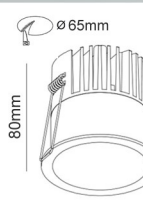
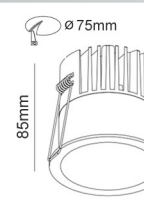


BFL1054-10W



BFL1054-12W



6W	8W	10W	12W
			
Ø 45mm	Ø 55mm	Ø 65mm	Ø 75mm
72mm	77mm	80mm	85mm
Ø 52mm	Ø 62mm	Ø 73mm	Ø 84mm

Model No.	BFL1054-6W	BFL1054-8W	BFL1054-10W	BFL1054-12W
Power	6W LED	8W LED	10W LED	12W LED
LED Type	CREE / PHILIPS	CREE / PHILIPS	CREE / PHILIPS	CREE / PHILIPS
Dimension	Dia:52xH72mm	Dia:62xH77mm	Dia:73xH80mm	Dia:84xH85mm
Voltage	AC165-265V	AC165-265V	AC165-265V	AC165-265V
Power Factor	>0.90	>0.90	>0.90	>0.90
Color Temp.	3000K - 6500K	3000K - 6500K	3000K - 6500K	3000K - 6500K
CRI	≥90	≥90	≥90	≥90
Luminous Flux	100-110LM/W	100-110LM/W	100-110LM/W	100-110LM/W
Temp. in Working	-30°C +50°C	-30°C +50°C	-30°C +50°C	-30°C +50°C
Beam Angle	15°/ 24°/ 38°/ 55°	15°/ 24°/ 38°/ 55°	15°/ 24°/ 38°/ 55°	15°/ 24°/ 38°/ 55°
Protection	IP65	IP65	IP65	IP65
Dimmable	TRIAC/1-10V/PWM/Dali Dimmable (Order code = / Dali Dim / PWM Dim)			
Life Span	50000Hrs			