



**FEATURES:**

- Recessed mounted waterproof LED Downlight
- COB LED chip by CREE / PHILIPS

**Body**

- Made of die-cast aluminium with surface powder coated.
- White, Black, Silver finish

**Diffuser**

- Tempered clear or frosted glass

**Reflector**

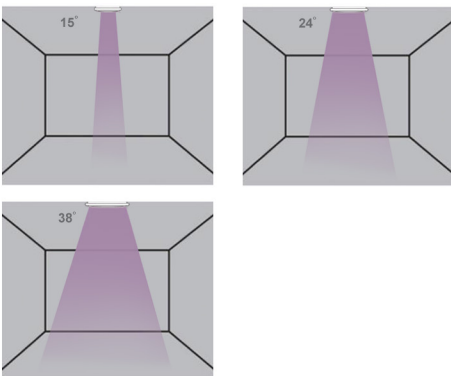
- Anodized aluminium

**Others**

- ◆ Aluminium structured heat sink
- ◆ High efficient COB LED chip
- ◆ Dimmable Dali / TRIAC 1 - 10V Available on request
- ◆ Heat resistant and solid conduct wiring
- ◆ Ideal for wet areas
- ◆ European standard of EN 60598

CRI > 90
UGR < 16
No flickering
Triac Dimming
1-10V Dimming
DALI Dimming

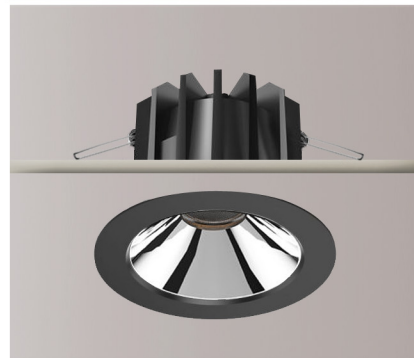
**Beam Angle**



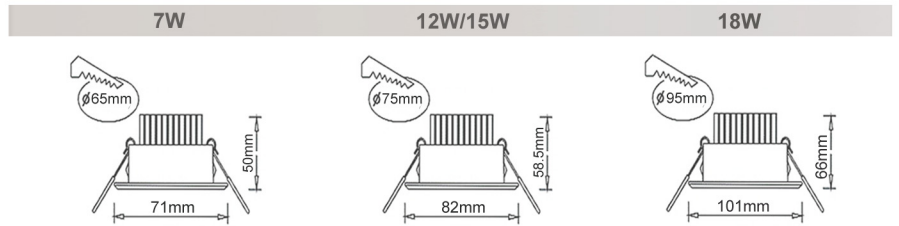
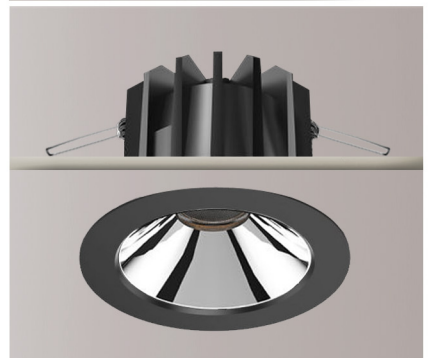
Available: 3000K 3500K 4000K 4500K 5000 - 5500K 6000 - 6500K

IP65
CE
NOM
SECO
EN 60598

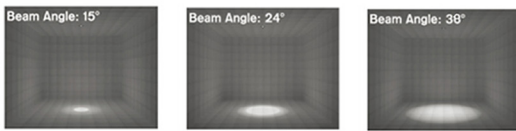
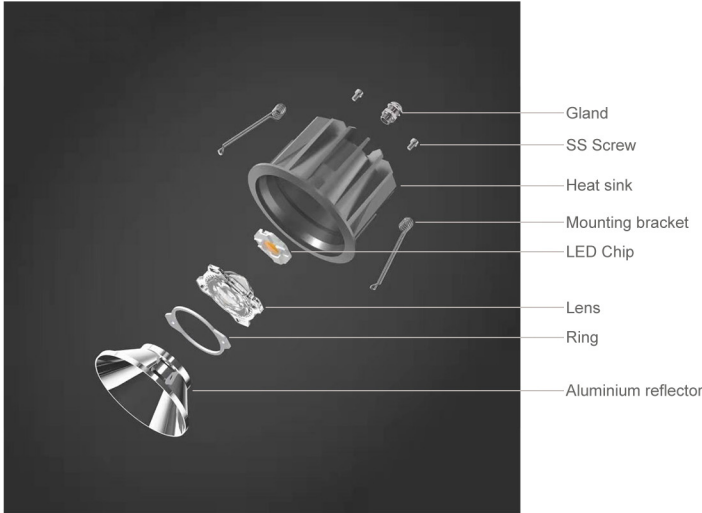
**BFL1023-7W**



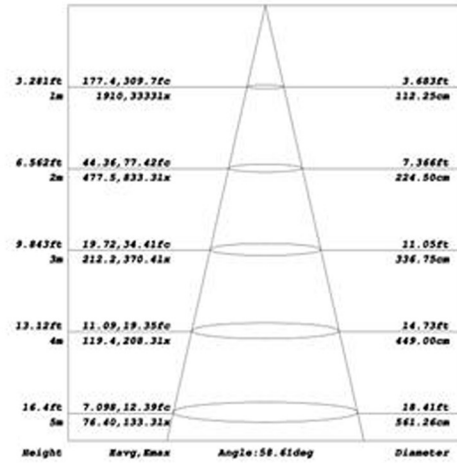
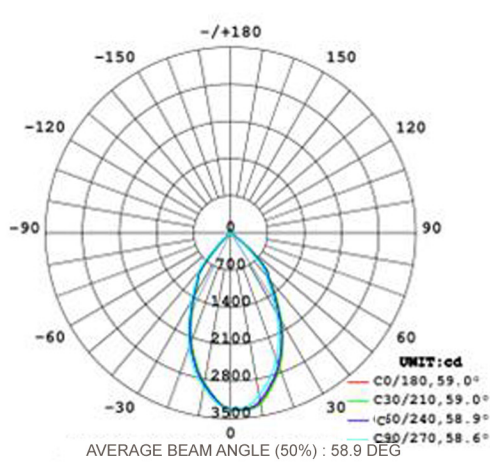
**BFL1023-15W**



Model No.	BFL1023-7W	BFL1023-12W	BFL1023-15W	BFL1023-18W
Power	7W LED	12W LED	15W LED	18W LED
LED Type	CREE	CREE	CREE	CREE
Dimension	Dia:71xH:50mm	Dia:82xH:58.5mm	Dia:82xH:58.5mm	Dia:101xH:66mm
Voltage	AC85V-265V	AC85V-265V	AC85V-265V	AC85V-265V
Power Factor	>0.90	>0.90	>0.90	>0.90
Color Temp.	2700K - 6500K	2700K - 6500K	2700K - 6500K	2700K - 6500K
CRI	≥90	≥90	≥90	≥90
Luminous Flux	100LM/W	100LM/W	100LM/W	100LM/W
Temp. in Working	-30°C +50°C	-30°C +50°C	-30°C +50°C	-30°C +50°C
Beam Angle	15°/ 24°/ 38°	15°/ 24°/ 38°	15°/ 24°/ 38°	15°/ 24°/ 38°
Driver	Philips	Philips	Philips	Philips
Dimmable	TRIAC/1-10V/PWM/Dali Dimmable ( Order code = / Dali Dim / PWM Dim)			
Life Span	50000Hrs			



**Photometric Data**



**Drive enclosure aluminium case, IP66**

