



### FEATURES:

- Recessed mounted downlight
- COB LED chip by Epistar

### Body

- Made of die-cast aluminium with polyester powder coated.
- White, Silver, Black finish

### Diffuser

- Polycarbonate striped transparent

### Reflector

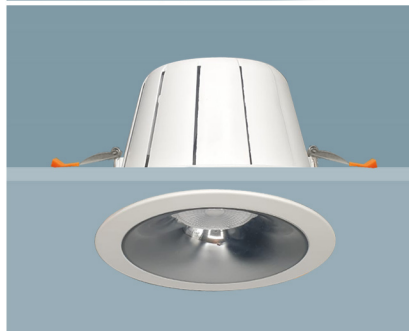
- High purity vacuum polycarbonate reflector
- Anodized aluminium available on request

### Others

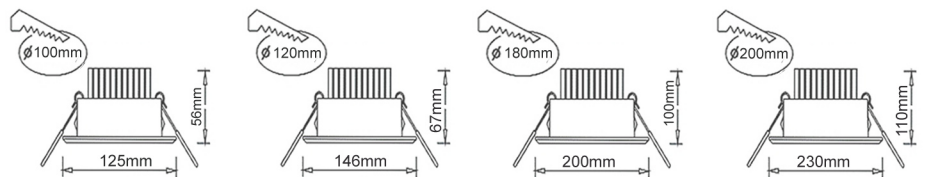
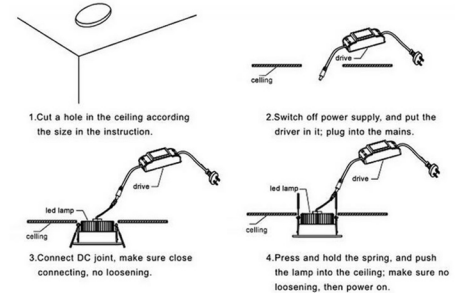
- ◆ Excellent heat dissipation
- ◆ High efficient COB LED chip
- ◆ Dimmable Dalli / TRIAC 0 - 10V Available on request
- ◆ Heat resistant and solid conduct wiring
- ◆ Ideal for interior lighting
- ◆ European standard of EN 60598



### SW-DL2105-(\*\*)



### Installation



Model No.	SW-DL2105-7W	SW-DL2105-12W	SW-DL2105-20W	SW-DL2105S-30W	SW-DL2105-40W	SW-DL2105-50W	SW-DL2105-30W
Power	7W LED	12W LED	20W LED	30W LED	40W LED	50W LED	30W LED
LED Type	COB - EPISTAR	COB - EPISTAR	COB - EPISTAR	COB - EPISTAR	COB - EPISTAR	COB - EPISTAR	COB - EPISTAR
Dimension	Dia: 90x90x44mm	Dia: 125x125x56mm	Dia: 146x146x67mm	Dia: 168x168x80mm	Dia: 200x200x100mm	Dia: 230x230x110mm	Dia: 230x230x110mm
Voltage	AC165V-245V	AC165V-245V	AC165V-245V	AC165V-245V	AC165V-245V	AC165V-245V	AC165V-245V
Power Factor	>0.90	>0.90	>0.90	>0.90	>0.90	>0.90	>0.90
Color Temp.	2700K - 6500K	2700K - 6500K	2700K - 6500K	2700K - 6500K	2700K - 6500K	2700K - 6500K	2700K - 6500K
CRI	≥80	≥80	≥80	≥80	≥80	≥80	≥80
Luminous Flux	100-110LM/W	100-110LM/W	100-110LM/W	100-110LM/W	100-110LM/W	100-110LM/W	100-110LM/W
Beam Angle	45°	45°	45°	45°	45°	45°	45°
Temp. in Working	-30°C +50°C	-30°C +50°C	-30°C +50°C	-30°C +50°C	-30°C +50°C	-30°C +50°C	-30°C +50°C
Protection	IP44	IP44	IP44	IP44	IP44	IP44	IP44
Drive	Isolated	Isolated	Isolated	Isolated	Isolated	Isolated	Isolated
Life Span				50000Hrs			