



FEATURES:

- Recessed mounted LED Downlight with honey comp louver for glare free dark lighting.
- COB LED chip by CREE

Body

- Made of die-cast aluminium with polyester powder coated.
- White, Red+Black, Black finish

Diffuser

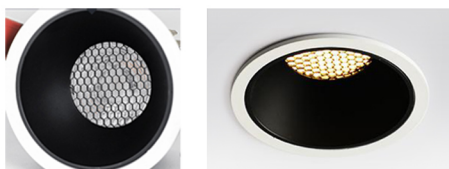
- Protective thermal shock resistant lens

Reflector

- Anti-glare reflector

Others

- ◆ Aluminium structured heat sink
- ◆ High efficient COB LED chip
- ◆ Dimmable Dali / TRIAC 0 - 10V Available on request
- ◆ Heat resistant and solid conduct wiring
- ◆ Ideal for Office, Public areas
- ◆ European standard of EN 60598



Available:

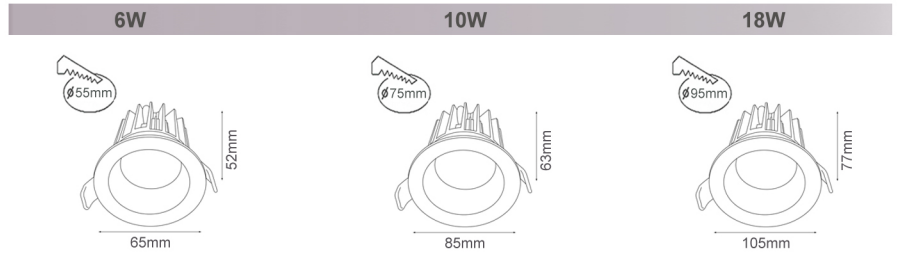
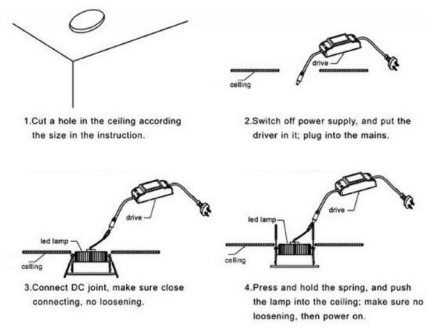
3000K	3500K	4000K	4500K	5000 - 5500K	6000 - 6500K
-------	-------	-------	-------	--------------	--------------



BT1002-R



Installation



Model No.	BT1002-R		
Power	6W LED	10W LED	18W LED
LED Type	CREE	CREE	CREE
Voltage	AC85V-265V	AC85V-265V	AC85V-265V
Power Factor	>0.90	>0.90	>0.90
Color Temp.	2700K - 6500K	2700K - 6500K	2700K - 6500K
CRI	≥90	≥90	≥90
Luminous Flux	100LM/W	100LM/W	100LM/W
Beam Angle	12°/ 24°/ 36°	12°/ 24°/ 36°	12°/ 24°/ 36°
Temp. in Working	-30°C +50°C	-30°C +50°C	-30°C +50°C
Protection	IP44	IP44	IP44
Dimension	65x52mm	85x63mm	105x77mm
Life Span	50000Hrs		