



### FEATURES:

- Surface and Recessed mounted aluminium profile
- Stainless steel mounting bracket

### Body

- Made of extruded aluminium in natural finish
- Powder coated finish (Option)
- White, Black, Grey & Silver

### Diffuser

- Prismatic or Opal Polycarbonate

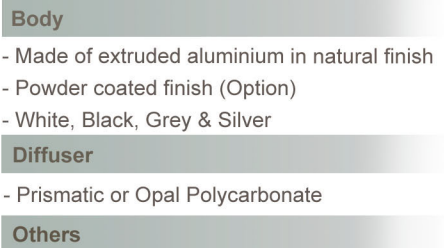
### Others

- ◆ Stainless steel mounting clip
- ◆ In it LED Drive (Meanwell)
- ◆ High quality SMD LED chip
- ◆ Heat resistant and solid conduct wiring
- ◆ Ideal for interior and exterior lighting
- ◆ European standard of EN 60598

Available:



IP65 Version on request



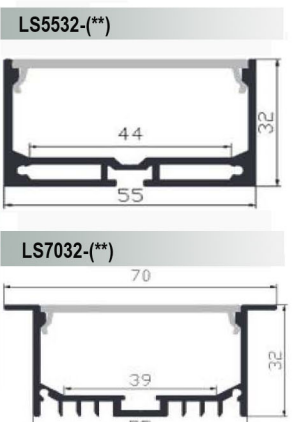
LS5532-(\*\*)



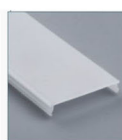
LS7032-(\*\*)



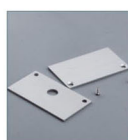
Model No.	LS5532-S	LS5532-D	LS7032-S	LS7032-D
Size	L1000xW55xH32mm	L1000xW102xH70mm	L1000xW55xH32mm	L1000xW55xH32mm
Power	14.5W	29W	14.5W	29W
Type of LED	Single line SMD	Double line SMD	Single line SMD	Double line SMD
Luminous Flux	100LM/W	100LM/W	100LM/W	100LM/W
Color Temp.	3000K-6500K	3000K-6500K	3000K-6500K	3000K-6500K
Voltage	DC12V/24V	DC12V/24V	DC12V/24V	DC12V/24V
Power Factor	0.95	0.95	0.95	0.95
Beam Angle	110°	110°	110°	110°
CRI	>80	>80	>80	>80
Working Temp.	-20-50°C	-20-50°C	-20-50°C	-20-50°C
Mounting Method	Surface / Recessed / wall			
Size	(Customade Size & Wattage on request)			
Life	50000Hrs			



Aluminium Profile



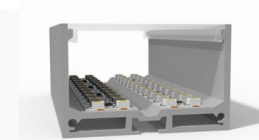
PC Cover



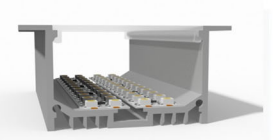
Metal end cap



Metal clip



Surface mounted double line SMD



Recessed mounted double line SMD