

FEATURES:

- Surface mounted underwater mini projector
- High efficiency light source, Cree & Edison 1W, 2W, 3W high power Single LED

Body

- Housing and frame made of stainless steel 316 Grade, High efficient heat sink for better heat dissipation.

Diffuser

- Tempered clear glass, heat-resisting and impact resistance.

Others

- ◆ Supplied with 1.5m 3wires / 5wires VDE rubber cable or UL rubber cable.
- ◆ LED life span: 50,000 - 60,000 hours
- ◆ Waterproof IP68
- ◆ Beam Angle 10-90°
- ◆ Heat resistant and solid conduct wiring
- ◆ Ideal for underwater lighting
- ◆ European standard of EN 60598

Options

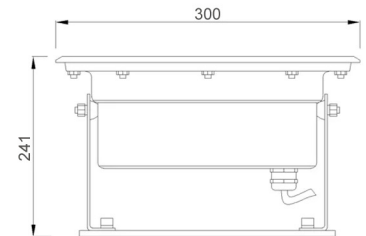
- Cable lengths can be supplied according to site requirements
- Beam Angle optional: 10°/15°/25°/30°/40°/60°/90°



Available:

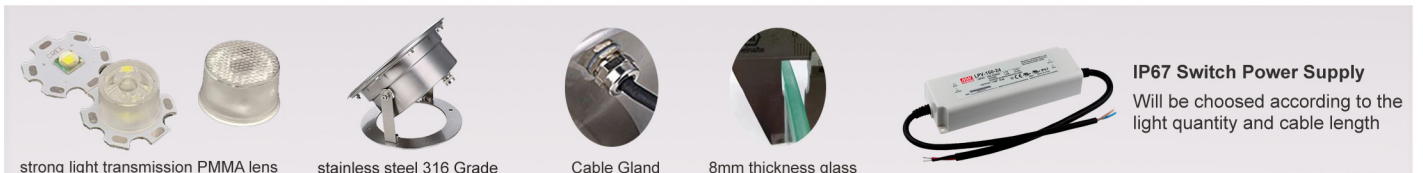


BRT-UW108



Model No.	BRT-UW108	BRT-UW108	BRT-UW108
Power	36*1W LED	36*2W LED	36*3W LED
LED Type	CREE / EDISON	CREE / EDISON	CREE / EDISON
Dimension	D300xH241mm	D300xH241mm	D300xH241mm
Voltage	DC12V / DC24V	DC12V / DC24V	DC12V / DC24V
Power Factor	>0.95	>0.95	>0.95
Color Temp.	2700K - 6500K / RGB	2700K - 6500K / RGB	2700K - 6500K / RGB
CRI	≥70	≥70	≥70
Luminous Flux	100LM/W	100LM/W	100LM/W
Temp. in Working	-30°C +50°C	-30°C +50°C	-30°C +50°C
Lens		Transparent	
Cable Gland		PG9 Nickel-plated Brass	
Control Mode	RDM / DMX512 (3 Channel) / DMX512 (4 Channel) / Auto change colour can be optional		

Accessories



strong light transmission PMMA lens

stainless steel 316 Grade

Cable Gland

8mm thickness glass

IP67 Switch Power Supply
Will be chosen according to the light quantity and cable length

Item code	LED Q'ty	Color	Control Mode	Line Way	Working Voltage
88106.108.01	36 pcs 1-3W LED	2700-3000K	/	V+/V-	AC12V DC12V DC24V
88106.108.02	36 pcs 1-3W LED	4000-4500K	/	V+/V-	AC12V DC12V DC24V
88106.108.03	36 pcs 1-3W LED	5000-5500K	/	V+/V-	AC12V DC12V DC24V
88106.108.04	36 pcs 1-3W LED	6000-6500K	/	V+/V-	AC12V DC12V DC24V
88106.108.05	36 pcs 1-3W LED	Red	/	V+/V-	AC12V DC12V DC24V
88106.108.06	36 pcs 1-3W LED	Green	/	V+/V-	AC12V DC12V DC24V
88106.108.07	36 pcs 1-3W LED	Blue	/	V+/V-	AC12V DC12V DC24V
88106.108.08	36 pcs 1-3W LED	Yellow	/	V+/V-	AC12V DC12V DC24V
88106.108.09	36 pcs 3W LED (3R+3G+3B)	RGB	DMX512 (3 channel)	V+/V-/D+/D-	AC12V DC12V DC24V
88106.108.10	36 pcs 3W LED (3R+3G+3B)	RGB	DMX512 (3 channel)	V+/V-/D+/D-	AC12V DC12V DC24V
88106.108.11	36 pcs 3W LED (3R+3G+3B)	RGB	Auto control	V+/V-	AC12V AC24V
88106.108.12	36 pcs 3W LED (3R+3G+3B)	RGB	External Build-in current-limiting circuit	R/G/B/V+	DC12V DC24V
88106.108.13	36 pcs 3in 1 LED (3R+3G+3B)	RGB	DMX512 (3 channel)	V+/V-/D+/D-	AC12V DC12V DC24V



Optical Lens

High quality 316 stainless steel helmet, superior level of tempered glass, resist compression and crack, super light transmitting ratio with advanced optical lens.



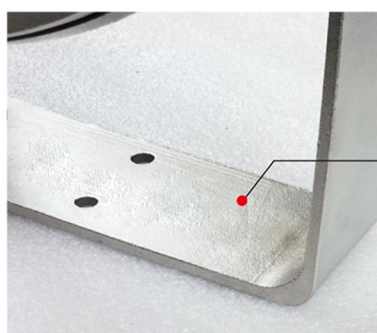
The Radiator

Adopting 316 stainless steel and thicken radiator, sufficient material to use, beautiful appearance, super performance for conductivity, perfect solution for the heat-dispersing of lamp body, keeping a very long lifespan for the light.



Screw

Adopting superior quality screw of 316 stainless steel, super strong for hardness, protecting the light from damaging being able to resist rust permanently to support and fix the lamp body powerfully.



Stents

High quality 316 stainless steel with adding thicken bracket, 100% sufficient material used, super power of hardness to protect the light from damaging, guaranteeing the light body to keep balance forever.