



FEATURES:

- Recessed mounted focusing Eye ball luminaire suitable for symmetrical and asymmetrical lighting
- COB LED chip by Epistar

Body

- Made of die-cast aluminium with surface powder coated in White & Black finish.

Diffuser

- Tempered clear glass

Reflector

- Anodized aluminium

Others

- ◆ Aluminium structured heat sink
- ◆ High efficient COB LED chip
- ◆ Heat resistant and solid conduct wiring
- ◆ Ideal for Office, Museum, Showroom, Public areas
- ◆ European standard of EN 60598



Available:

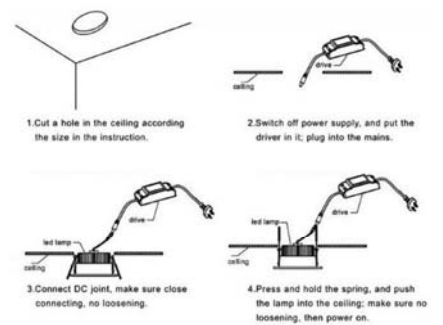
3000K	3500K	4000K	4500K	5000 - 5500K	6000 - 6500K
-------	-------	-------	-------	--------------	--------------



TM-H4001



Installation



Model No.	TM-H4001	TM-H4001	TM-H4001	TM-H4001	TM-H4001
Power	5W / 10W LED	10W / 15W LED	15W / 20W LED	30W LED	40W LED
LED Type	Epistar	Epistar	Epistar	Epistar	Epistar
Dimension	Dia:90xH:80mm	Dia:113xH:90mm	Dia:130xH:90mm	Dia:160xH:110mm	Dia:190xH:130mm
Voltage	AC85V-265V	AC85V-265V	AC85V-265V	AC85V-265V	AC85V-265V
Power Factor	>0.90	>0.90	>0.90	>0.90	>0.90
Color Temp.	2700K - 6500K	2700K - 6500K	2700K - 6500K	2700K - 6500K	2700K - 6500K
CRI	≥80	≥80	≥80	≥80	≥80
Luminous Flux	100LM/W	100LM/W	100LM/W	100LM/W	100LM/W
Temp. in Working	-30°C +50°C	-30°C +50°C	-30°C +50°C	-30°C +50°C	-30°C +50°C
Beam Angle	15/30/45°	15/30/45°	15/30/45°	15/30/45°	15/30/45°
Protection	IP44	IP44	IP44	IP44	IP44
Dimmable	TRIAC/0-10V/PWM/Dali Dimmable (Order code = / Dali Dim / PWM Dim)				
Life Span	50000Hrs				

