

FEATURES:

- Recessed asymmetrical LED wall washer luminaire

Body

- Made of aluminium alloy, Uv-stabilized, powder coated in White, Black, Silver finish.

Diffuser

- Transparent diffuser available on request

Reflector

- Anodized aluminium asymmetrical reflector

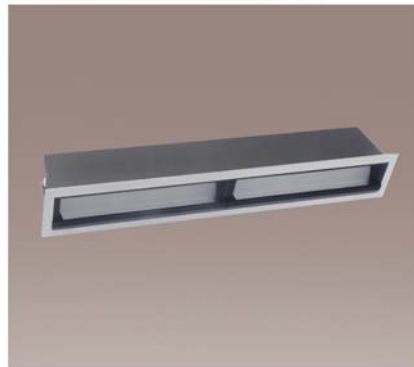
Others

- ◆ Aluminium structured heat sink for better heat dissipation
- ◆ High efficient Osram LED chip
- ◆ Heat resistant and solid conduct wiring
- ◆ Ideal for Office, Showroom, Hotel etc.
- ◆ European standard of EN 60598

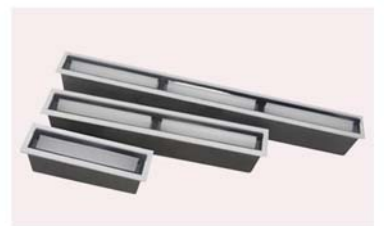
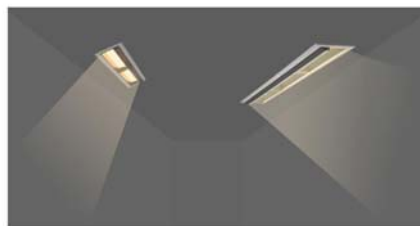
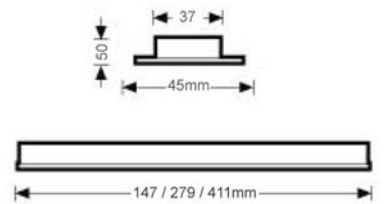
Dimension



TM-S2071



Dimension



Model No.	TM-S2071	TM-S2071	TM-S2071
Power	10W LED	20W LED	30W LED
Type of LED	Osram	Osram	Osram
Dimension	L147xW45xH50mm	L279xW45xH50mm	L403xW45xH50mm
Voltage	220-240V/60Hz	220-240V/60Hz	220-240V/60Hz
Power Factor	>0.95	>0.95	>0.95
Color Temp.	2700K - 6500K	2700K - 6500K	2700K - 6500K
CRI	≥80	≥80	≥80
Luminous Flux	100LM/W	100LM/W	100LM/W
Temp. in Working	-20°C +50°C	-20°C +50°C	-20°C +50°C
Angle	15° / 30° / 45°	15° / 30° / 45°	15° / 30° / 45°
Drive	Philips	Philips	Philips
Protection	IP44	IP44	IP44
Life Span		50000Hrs	