



FEATURES:

- Recessed mounted decorative downlight
- SMD LED chip by Samsung / Epistar

Body

- Made of die-cast aluminium with surface powder coated.
- Chrome, White finish

Diffuser

- Opal polycarbonate / PMMA, thermal shock resistant

Reflector

- Glare free white reflector

Others

- ◆ Aluminium structured heat sink
- ◆ High efficient SMD LED chip
- ◆ Dimmable Dalli / TRIAC 0 - 10V Available on request
- ◆ Heat resistant and solid conduct wiring
- ◆ Ideal for interior lighting
- ◆ European standard of EN 60598

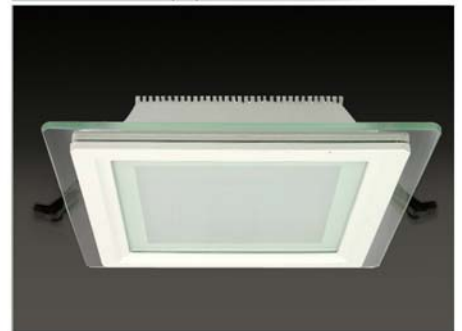
Available: 3000K 3500K 4000K 4500K 5000 - 5500K 6000 - 6500K



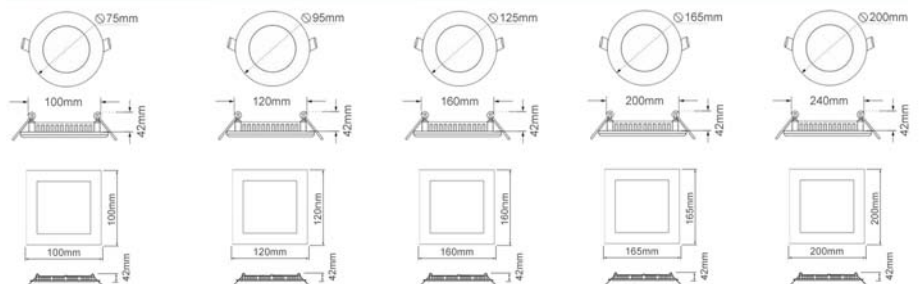
SW-DL022R-(**)



SW-DL022Q-(**)



SW-DL022R/Q-6W SW-DL022R/Q-9W SW-DL022R/Q-12W SW-DL022R/Q-18W SW-DL022R/Q-24W



Model No.	SW-DL022R/Q-06	SW-DL022R/Q-09	SW-DL022R/Q-12	SW-DL022R/Q-18	SW-DL022R/Q-24
Power	6W LED	9W LED	12W LED	18W LED	24W LED
LED Type	SMD	SMD	SMD	SMD	SMD
Dimension	Dia: 100xH:42mm	Dia: 120xH:42mm	Dia: 160xH:42mm	Dia: 200xH:42mm	Dia: 240xH:42mm
Voltage	AC85-265V/50-60Hz	AC85-265V/50-60Hz	AC85-265V/50-60Hz	AC85-265V/50-60Hz	AC85-265V/50-60Hz
Power Factor	>0.95	>0.95	>0.95	>0.95	>0.95
Color Temp.	2700K - 6500K	2700K - 6500K	2700K - 6500K	2700K - 6500K	2700K - 6500K
CRI	≥80	≥80	≥80	≥80	≥80
Luminous Flux	100LM/W	100LM/W	100LM/W	100LM/W	100LM/W
Temp. in Working	-30°C +50°C	-30°C +50°C	-30°C +50°C	-30°C +50°C	-30°C +50°C
Beam Angle	120°	120°	120°	120°	120°
Protection	IP44	IP44	IP44	IP44	IP44
Life Span			50000Hrs		

