



FEATURES:

- Surface mounted downlight

Body

- Made of extruded aluminium
- Chrome, White finish

Diffuser

- Fiber / Nano

Others

- ◆ Builtin HF Drive
- ◆ High efficient SMD EPISTAR LED chip
- ◆ Heat resistant and solid conduct wiring
- ◆ Ideal for Office, Public areas
- ◆ European standard of EN 60598

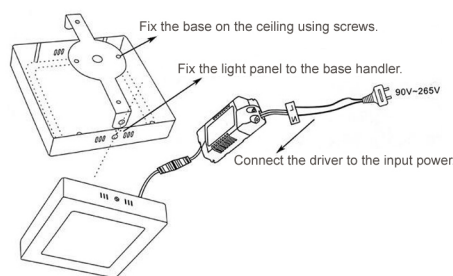
Model No.	SW-SM001-6R	SW-SM001-10R	SW-SM001-12R	SW-SM001-15R	SW-SM001-18R	SW-SM001-24R
Power	6W SMD LED	10W SMD LED	12W SMD LED	15W SMD LED	18W SMD LED	24W SMD LED
Type of LED	SMD2835 - 30pcs	SMD2835 - 45pcs	SMD2835 - 60pcs	SMD2835 - 75pcs	SMD2835 - 90pcs	SMD2835 - 120pcs
Dimension	120x120x40mm	170x170x40mm	170x170x40mm	170x170x40mm	225x225x40mm	300x300x40mm
Voltage	AC160V-245V	AC160V-245V	AC160V-245V	AC160V-245V	AC160V-245V	AC160V-245V
Power Factor	>0.95	>0.95	>0.95	>0.95	>0.95	>0.95
Color Temp.	2700K - 6500K	2700K - 6500K	2700K - 6500K	2700K - 6500K	2700K - 6500K	2700K - 6500K
CRI	≥70	≥70	≥70	≥70	≥70	≥70
Luminous Flux	400-500LM	700-800LM	850-950LM	1050-1150LM	1250-1350LM	1650-1750LM
Temp. in Working	-20°C +50°C	-20°C +50°C	-20°C +50°C	-20°C +50°C	-20°C +50°C	-20°C +50°C
Angle	45 - 60°	45 - 60°	45 - 60°	45 - 60°	45 - 60°	45 - 60°
Driver	Isolated	Isolated	Isolated	Isolated	Isolated	Isolated
Life Span	35000 - 45000Hrs					



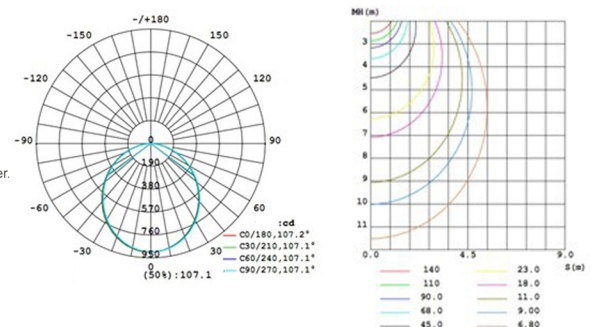
SW-SM001-(**)



Installation Method



Luminous Distribution & Lux Diagram



SW-SM001-6R	SW-SM001-10R	SW-SM001-12R	SW-SM001-15R	SW-SM001-18R	SW-SM001-24R
-------------	--------------	--------------	--------------	--------------	--------------

