



**FEATURES:**

- Recessed mounted focusing Eye ball
- COB LED chip by CREE-USA
- SMD LED chip by Samsung / Epistar

**Body**

- Made of die-cast aluminium with surface powder coated.
- Chrome, White finish

**Diffuser**

- Fiber / Nano (SMD LED version)
- Tempered glass (COB LED (version))

**Others**

- ◆ Aluminium structured heat sink
- ◆ High efficient COB / SMD LED chip
- ◆ Heat resistant and solid conduct wiring
- ◆ Ideal for Office, Public areas
- ◆ European standard of EN 60598



Available:

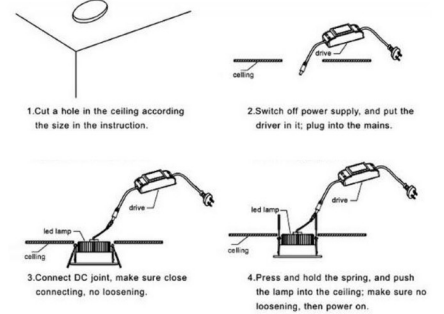
3000K	3500K	4000K	4500K	5000 - 5500K	6000 - 6500K
-------	-------	-------	-------	--------------	--------------



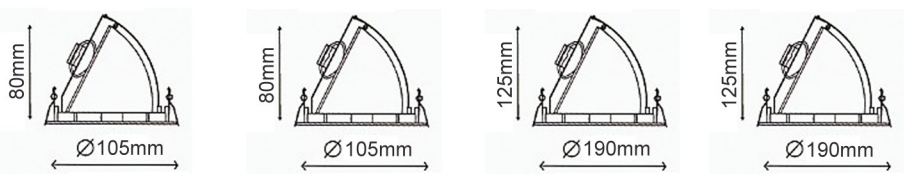
**SW-EB025-(\*\*)**



**Installation**



**SW-EB025-7W      SW-EB025-10W      SW-EB025-20W      SW-EB025-25W**



Model No.	SW-EB025-7W	SW-EB025-10W	SW-EB025-20W	SW-EB025-25W
Power	7W LED	10W LED	20W LED	25W LED
LED Type	SMD / COB	SMD / COB	SMD / COB	SMD / COB
Dimension	Dia:105xH:80mm	Dia:105xH:80mm	Dia:190xH:125mm	Dia:190xH:125mm
Voltage	AC85V-265V	AC85V-265V	AC85V-265V	AC85V-265V
Power Factor	>0.90	>0.90	>0.90	>0.90
Color Temp.	2700K - 6500K	2700K - 6500K	2700K - 6500K	2700K - 6500K
CRI	≥80	≥80	≥80	≥80
Luminous Flux	100-120LM/W	100-120LM/W	100-120LM/W	100-120LM/W
Temp. in Working	-30°C +50°C	-30°C +50°C	-30°C +50°C	-30°C +50°C
Beam Angle	24/40/60/90°	24/40/60/90°	24/40/60/90°	24/40/60/90°
Protection	IP44	IP44	IP44	IP44
Dimmable	TRIAC/0-10V/PWM/Dali Dimmable ( Order code = / Dali Dim / PWM Dim)			
Life Span	50000Hrs			