



FEATURES:

- Slim LED linear Rigid Bar
- Under Cabinet slim luminaire

Body

- Made of extruded aluminium
- Powder coated finish (Option)
- Black and White

Diffuser

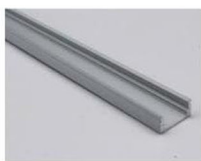
- Polycarbonate / Acrylic.

Others

- ◆ Stainless steel mounting clip
- ◆ PVC end cap
- ◆ High quality SMD LED chip
- ◆ Heat resistant and solid conduct wiring
- ◆ Ideal for interior lighting
- ◆ European standard of EN 60598



End cap with hole
End cap without hole



Aluminium Profile



Rotable mounting clips



Mounting clip (PC)



Mounting clip



Mounting clip (PC)

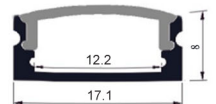
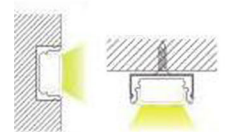
Available:



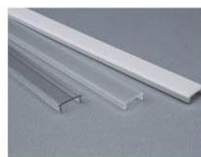
IP44/65



B-LL-02 (**)



Model No.	B-LL-02(**)	B-LL-02(**)	B-LL-02(**)	B-LL-02(**)
Power	6W - 14.4W LED	12W - 28.8W LED	4.8W - 10W LED	9.6W - 17W LED
Type of LED	5050	5050	3528 / 2835	3528 / 2835
No. of LED	60LED/M	120LED/M	60LED/M	120LED/M
Voltage	DC-12V / 24V	DC-12V / 24V	DC-12V / 24V	DC-12V / 24V
Color Temp.	3000-6000K	3000-6000K	3000-6000K	3000-4000K
CRI	≥80	≥80	≥80	≥80
Luminous Flux	85-90LM/W	85-90LM/W	85-90LM/W	85-90LM/W
Temp. in Working	-20°C +50°C	-20°C +50°C	-20°C +50°C	-20°C +50°C
Dimension	1000x17.1x8mm	1000x17.1x8mm	1000x17.1x8mm	1000x17.1x8mm
Protection Grade	IP44 / 65	IP44 / 65	IP44 / 65	IP44 / 65
Life Span	35000-45000Hrs	35000-45000Hrs	35000-45000Hrs	35000-45000Hrs
Dimmable	TRIAC/0-10V/PWM/Dali Dimmable (Order code = / Dali Dim / PWM Dim)			
Warranty	3Years			



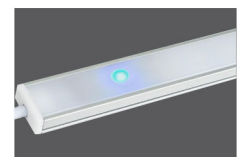
PMMA Opal matt cover
PMMA semi-clear cover
PMMA clear cover
PC Diffuser cover



LED Strip: 5050LED,
60LEDs/M, 14.4W/M



LED Driver



IR ON / OFF