



FEATURES:

- Rigid Bar LED linear light

Body

- Made extruded aluminium (Aluminium finish).
- Powder coated finish (Option)
- Black and White

Diffuser

- Polycarbonate / Acrylic.

Others

- ◆ Aluminium structured heat sink
- ◆ High quality SMD LED chip
- ◆ Heat resistant and solid conduct wiring
- ◆ Ideal for interior lighting
- ◆ European standard of EN 60598

Available:

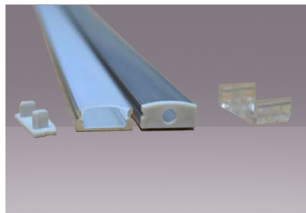
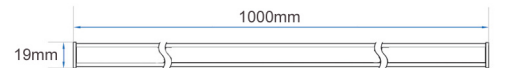
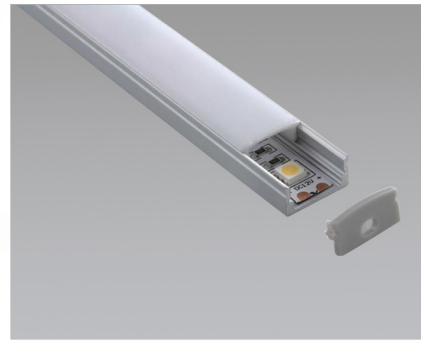


IP65

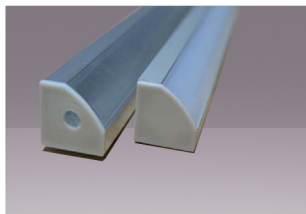
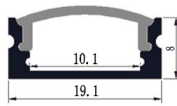
CE NOM

SUPERINTENDENCIA DE ELECTRICIDAD Y COMBUSTIBLES SEC

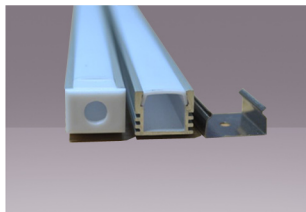
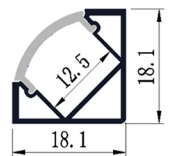
EN EC



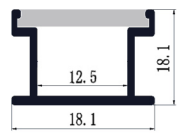
LD1801A



LD1801B



LD1801C



Model No.	LD1801A	LD1801B	LD1801C
Power	6W - 10W LED	6W - 14.4W LED	6W - 14.4W LED
Type of LED	5050 - 60LED/M	5050 - 60LED/M	5050 - 60LED/M
Voltage	DC-12V / 24V	DC-12V / 24V	DC-12V / 24V
Color Temp.	3500-4000K	3500-4000K	3500-4000K
CRI	≥80	≥80	≥80
Luminous Flux	80-90LM	80-90LM	80-90LM
Temp. in Working	-20°C +50°C	-20°C +50°C	-20°C +50°C
Dimension	1000x19.1x8mm	1000x18.1x18.1mm	1000x18.1x18.1mm
Protection Grade	IP65	IP65	IP65
Life Span		45000-50000Hrs	

